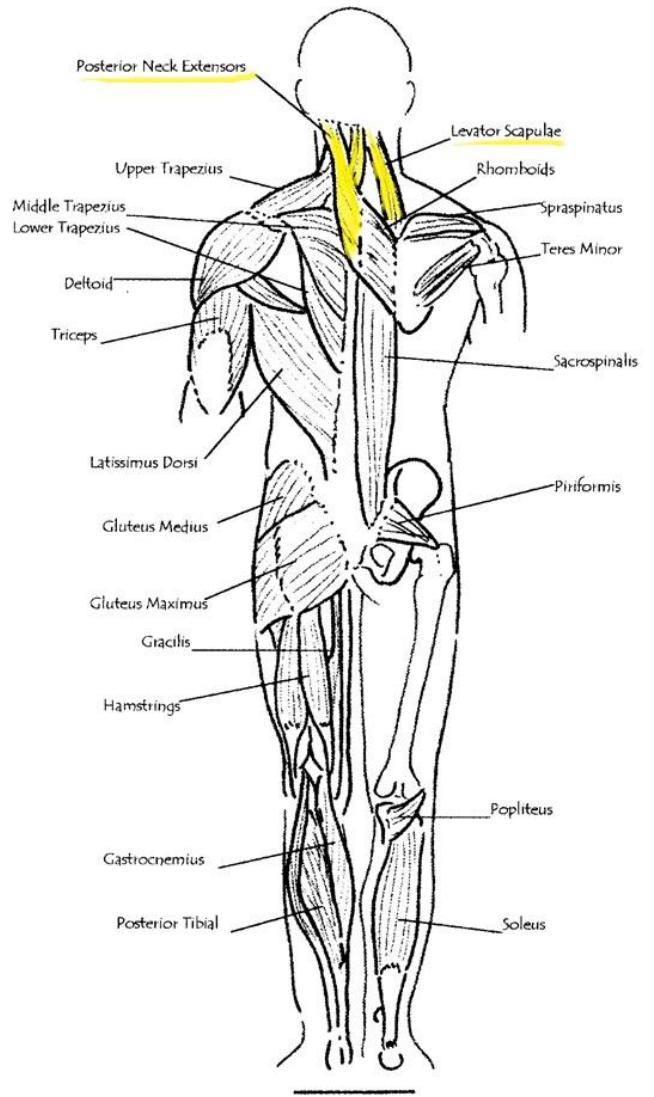
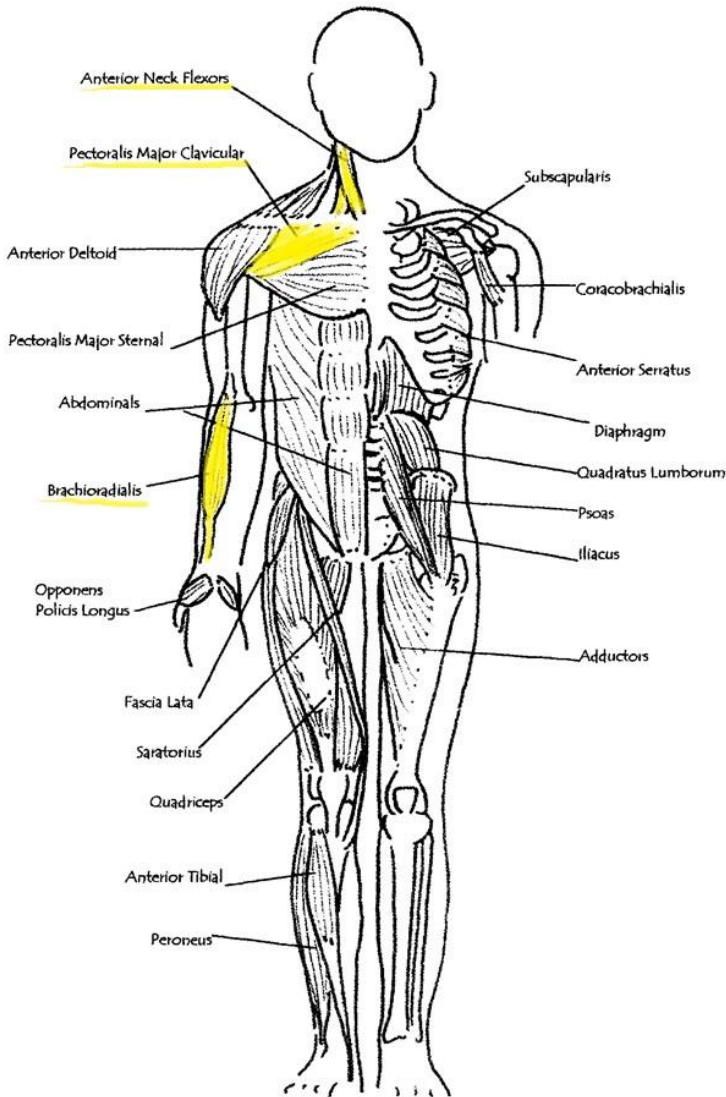
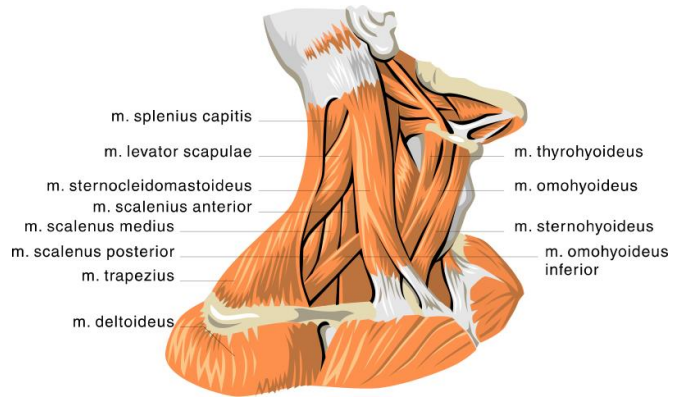


faceTs of the Neck

Physical

Muscular

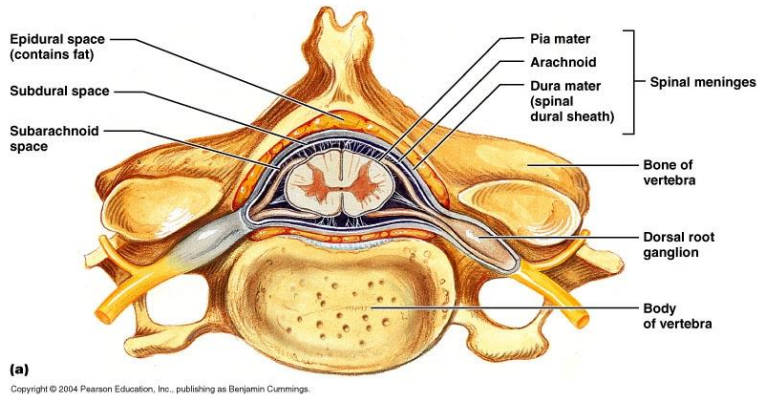
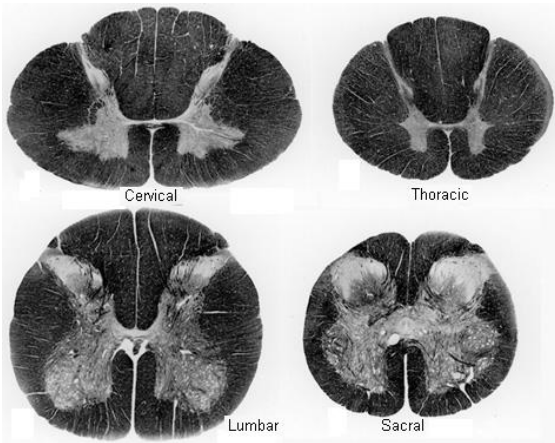
| | |
|-----------------------------|---------|
| Neck flexors and extenders | Stomach |
| Anterior neck flexors | Stomach |
| Upper Trapezius | Kidneys |
| Levator Scapulae | Stomach |
| Pectoralis Major Clavicular | Stomach |
| | |



Physical

Structural

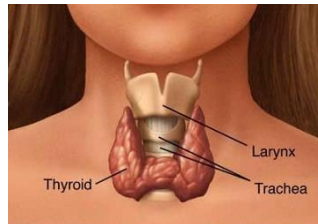
Cervical Vertebra
Arch Angels



- C1 - Middle Ear, Optic Nerves
- C2 - Eyes, Optic Nerves, Tongue
- C3 - Outer Ear, Teeth
- C4 - Nose, Lips, Eustachian Tubes
- C5 - Vocal Cords, Pharynx
- C6 - Neck Muscles, Tonsils
- C7 - Thyroid, Shoulders

Hormonal

Thyroid



Thyroid

- Metabolism
- Body Temp
- Cardiovascular

Parathyroid

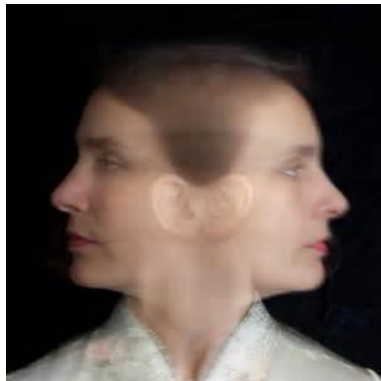
- Calcium balance in body

Supplements

- Kelp
- Iodine

Mobility

- + Being able to see both sides
- Limited view of something



Mental

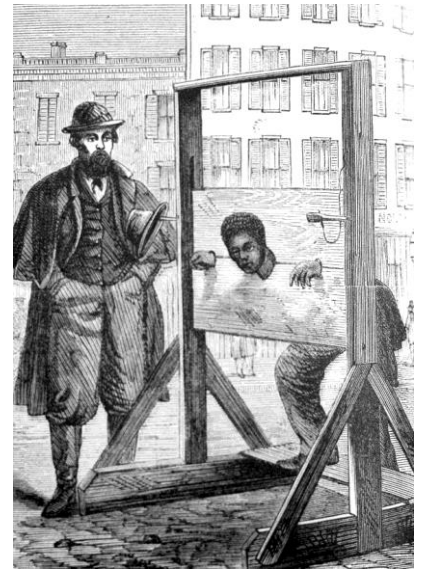
Thinking and Doing

- Thinking something but not doing it
- Doing something but thinking you should not



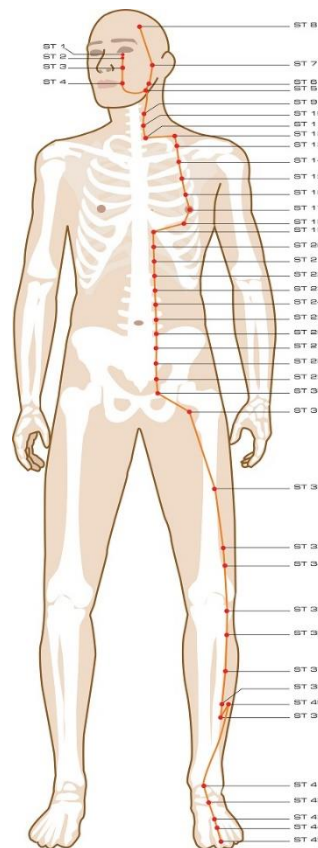
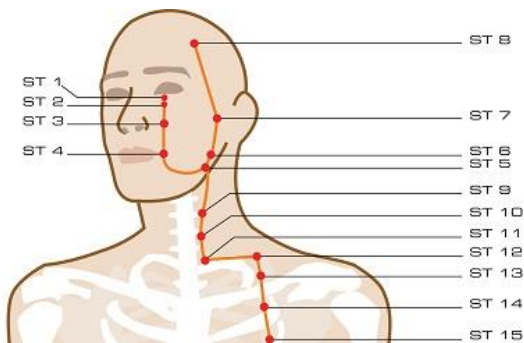
Emotional

Despair
Can't say "NO!"
Flower: **Centaur**
Nervous
Obsession
Anxiety
Worry
Broken Power (**Valor oil**)
Dislike
Disgust
Smoldering Hate
Too much to handle
Stressed Out
Devested
Too high Demands
Not able to digest something
Skepticism
Poor Confidence
Mistrust



Meridians

Mostly Stomach



Energy

Throat chakra
Self-expression
Over expressing or under expressing
The Solar Plexus is the Throat Chakra's partner.



Questions to ask your Clients

Do you have trouble saying "NO!"

Are you having trouble seeing all the sides of an issue or situation?

How is digestive system?

Are you resisting a situation?

Have you been feeling disgusted about something?

Do you feel stifled in some way?

Have you been swallowing angry words?

Do you feel the weight of the world or something or someone on your shoulders?

Jon Tomas Whatley, LMT, BioTheosis, Medical Intuitive

www.DivineSourceCode.com