

ARC (electricity) of the COVENANT

The Ark of the Covenant is a chest described in the Book of Exodus (as in leaving captivity) that contains the Tablets of Stone (two lobed pituitary gland) on which the Ten Commandments (hormones aka chemical directions) were inscribed, Aaron's rod (kundalini aka Caduceus/medical STAFF) is the STAFF that Moses/Mosheh (mo: Egyptian for water, uses: to save or draw = Moses: to draw from water) threw down and it became a snake, a jar of manna (manna = mushroom/psychedelics, the pituitary is shaped like a mushroom) and the first Torah Scroll (toroidal field).

God was said to have communicated with Moses from between the two cherubim on the Ark's cover.

So where is the Ark of the Covenant? Was it ever lost?

1 Kings 6:27

And he set the cherubim within the inner house

The holy of holies:

and they stretched forth the wings of the cherubims;

the carvers that framed them, they wrought them in that form; or impersonally, the wings of the cherubim were stretched out; this was the position of them, they overshadowed and covered the mercy seat and ark, and even the other two cherubim that were at the ends of the mercy seat:

so that the wing of the one touched the one wall;

the southern wall:

and the wing of the other cherub touched the other wall;

the northern wall; they reached from wall to wall, even the whole breadth of the house, which was twenty cubits, as their wings thus spread were, (1 Kings 6:24 1 Kings 6:25) (2 Chronicles 3:11) ;

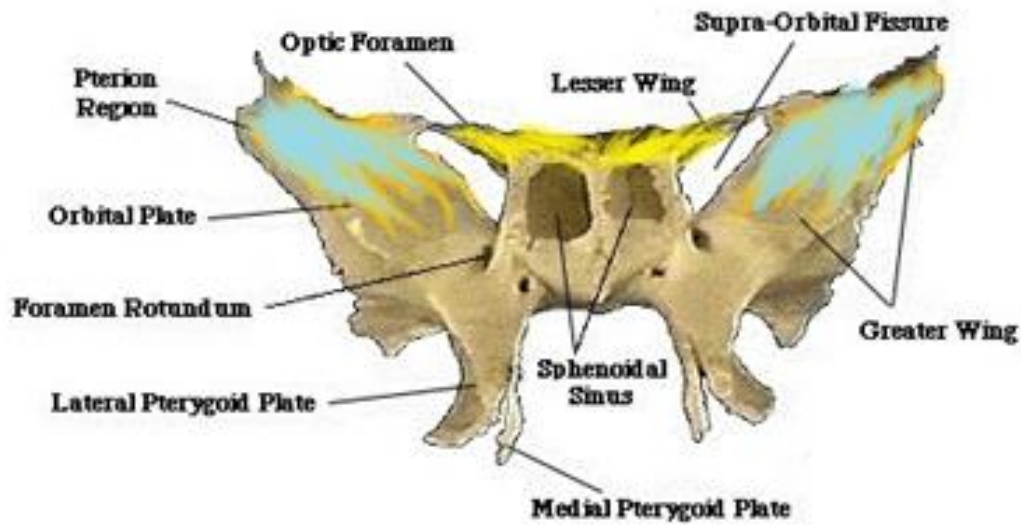
The room was 20 cubits wide. 1 Cubit = 1.5 feet. This means the room was 30 feet wide. If the wings touched the walls on each side this means the Ark was 30 feet wide. Wow! That is huge! Maybe the measurement was off to throw us off.

and their wings touched one another in the midst of the house,

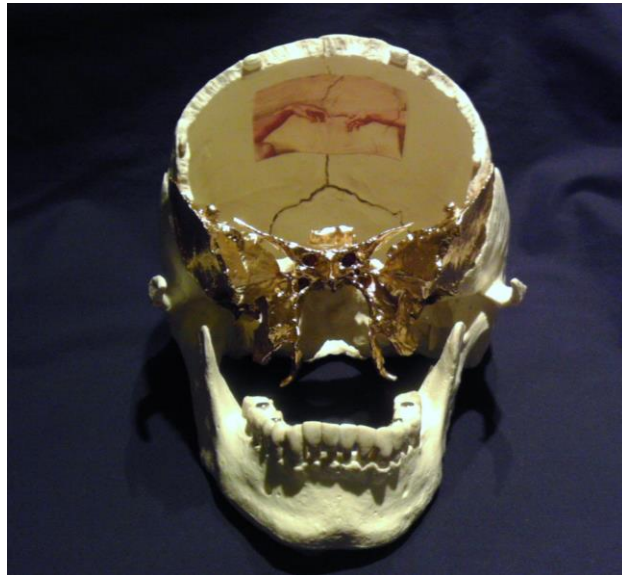
which was ten cubits, and that was the spread of the wings of each of them; so that the wing of the right side of the one, stretched out, touched the wing of the left side of the other fit the same position; in (2 Chronicles 3:13) ; their faces are said to be "inward", or "toward the house"; either toward the holy place, and so faced those that came into that and saw them; or towards the inner part of the holy of holies, their backs being to the holy place, or their faces were inward, and looked obliquely to each other.

The REAL Ark of the Covenant

It's the sphenoid bone of your skull!



"Make the Cherubim of **ONE PIECE**" -Exodus 25:19 **One bone!!**



Notice that it has wings (the greater wing that spread out and touch the walls of your skull and lesser wings that touch in the middle 1 Kings 6:27). It also looks like an owl, which is a symbol that secret societies like to use. They are actually stating that they got you by the Third Eye aka they tell you what to think, and control you through deception by manipulating the hormones you release!!!

The Sphenoid Bone is the REAL Ark of the COVENant

The sphenoid bone is located in the center of your head. It is the key stone of the skull. It houses the pituitary gland. This gland is associated with your 3rd Eye, which gives you Perception when opened and Deception/ILLusion when closed. The pituitary gland also governs over hormonal release. Hormones are the chemicals that control your body's functions. Do you want to control your body or have someone else GOVERN over it?



Free 3rd Eye / Perception

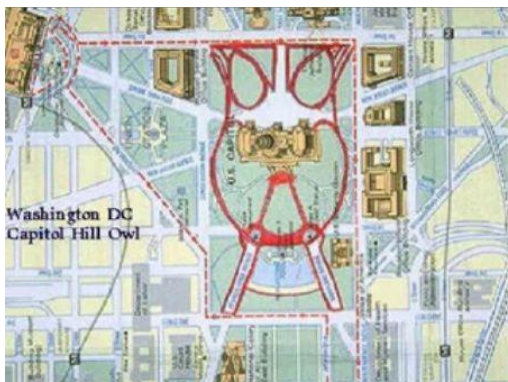


Hoo Hoo!



Deceived = Clouded Perception

“Pleased to meet you, hope you guessed my name Oh Yeah...WHO HOOO”



Our Capital is a cast magic circle. Bohemian Club/Coven Symbol Nixon and Reagan at Bohemian Grove

They are saying, “We have you by your 3rd eye. You will hear, say and do as we want!”