

Divine or Divided

You are either IN (connected to Source) or
your ID (unconscious urges/habits) is behind your will/wheel.

Jon Tomas Whatley
BioTheosis Therapeutic Coach
www.DivineSourceCode.com

In the beginning...

John 1:1 In the beginning was the Word, and the Word was with God, and the Word was God.

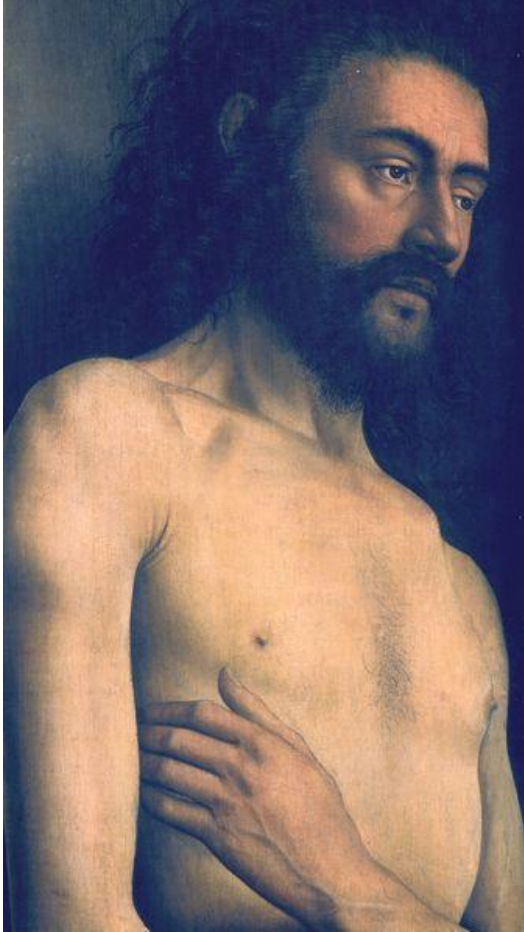


"I got the power! WORD to me!"

God created Adam and Eve

Adam – Atom – Right – Pingala

Eve – Time – Left – Ida



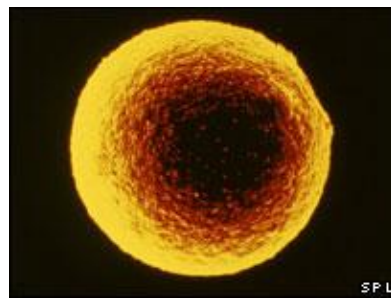
Adoration of the Mystic Lam, completed 1432.

Doesn't that look an awful lot like a pinecone in Eve's hand?

Father – Sky

Mother – Earth

(Latin mater = matter)



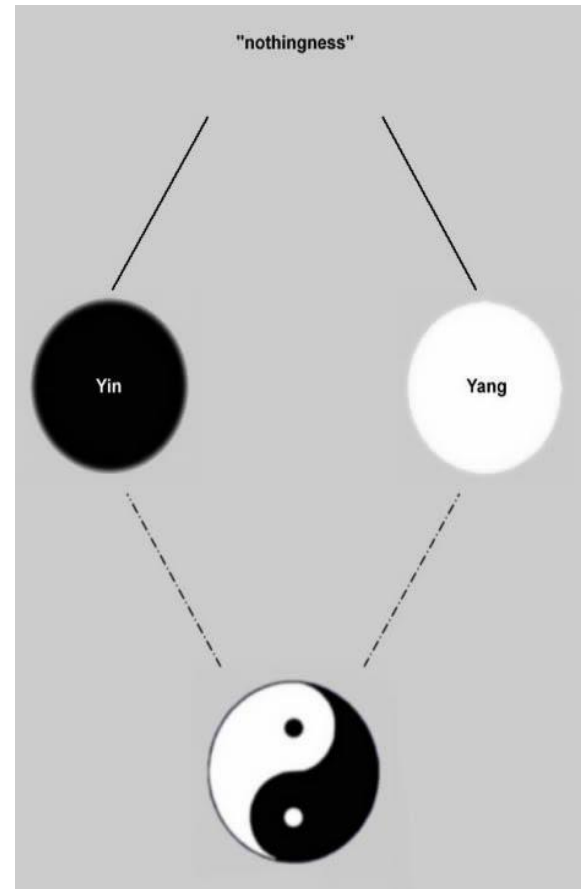
Wave

Particle

You are an infinitely POWER-FULL being of the Uni-Verse (one unified song)!

Within you the YOUiverse (the microcosm) lives the fractal reflections of the UNiverse (the macrocosm). The same patterns are used from the largest scale to the smallest. ANY OBJECT is the midpoint. You are the midpoint of the macrocosm UNiverse outside of you and the microcosm youiverse within you!!!! It literally goes just as far inside you as outside of you.

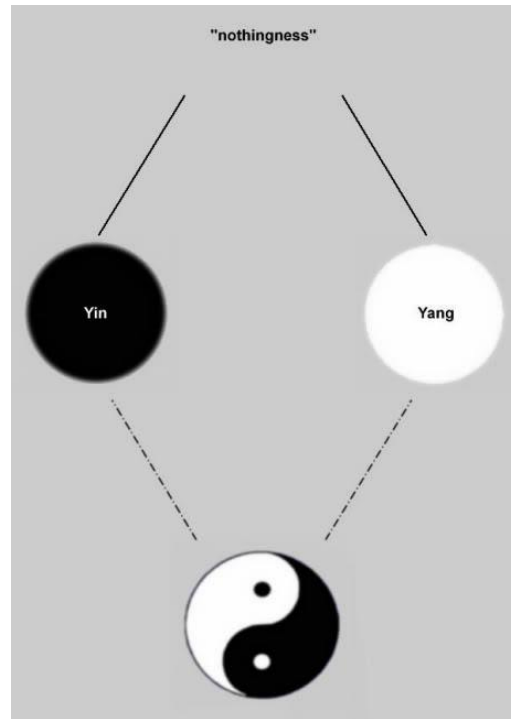
Within you is EVERYTHING! Moment to moment, day to day and year to year you play out the story of the youiverse from the Big Bang on! In your physicality are written the major stories and landmarks in ALL SPIRITUAL (it's you in the SPIRAL) text.



At the center of your being is a SING-YOULARITY. It is your unique frequency that you bring to the big Orchestra aka UNI-verse.

Day – Man – Yang & Night – Woman – Yin

Genesis ³And God said, "Let there be light"; and there was light. ⁴ And God saw that the light was good; and God separated the light from the darkness. ⁵ God called the light Day, and the darkness he called Night. And there was evening and there was morning, one day.



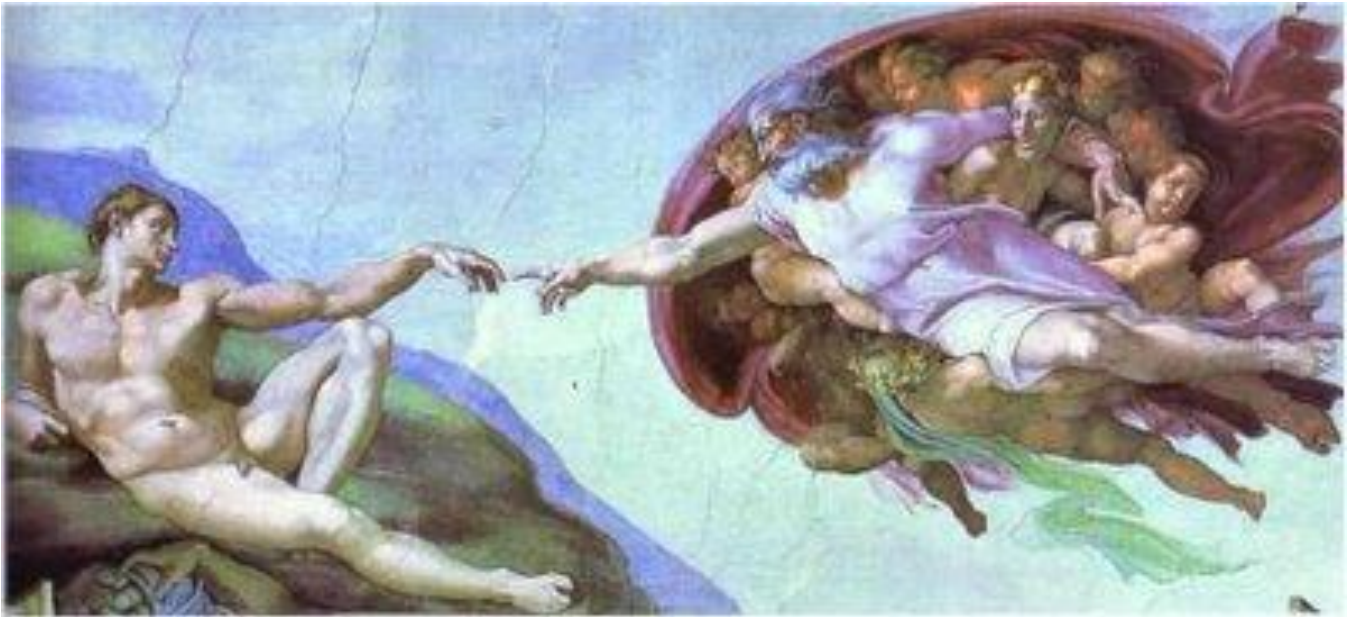
Genesis ²¹ So the LORD God caused a deep sleep to fall upon the man, and while he slept took one of his ribs and closed up its place with flesh; ²² and the rib which the LORD God had taken from the man he made into a woman and brought her to the man. ²³ Then the man said, "This at last is bone of my bones and flesh of my flesh; she shall be called Woman, because she was taken out of Man."

This is basically describing the Yin and Yang symbol. Woman was created out of man and man is born out of the woman. **This was basically a simultaneous creation. Man nor woman came first they were brought into being (birthed out of God) at the same time!**

Chilling with God

In the beginning Adam and Eve were in commUNION with the Life Giving and Life Sustaining Force aka Source aka God in the Garden, which is the whole planet.

Michelangelo's Creation of Man



Do you notice anything out of the ordinary???



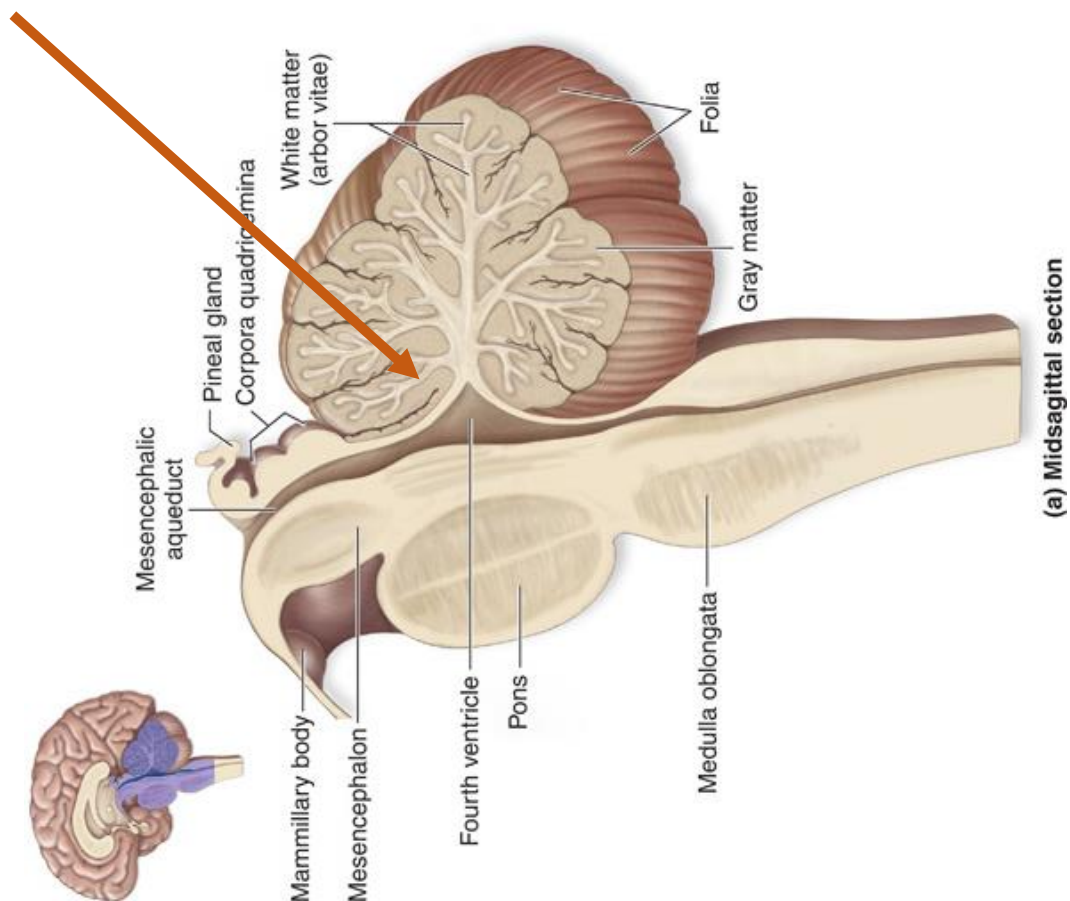
What about now?

The Fall

Our PINEals and Pituitaries were fully opened. We saw and interacted in a tangible manner with Source. We received (PINEal) and projected (Pituitary) our reality. We consciously Co-created with Source.

When humanity ate from the fruit of the Tree of Knowledge of Good and Bad aka Judgement, we became locked into our lower Reptilian aka Survival bRAin. Continually reproducing less than Enthusiastic (PINEal) and Inspired (Pituitary) chemicals and hormones. Unity was replaced with Separation

Tree of Knowledge of Good and Bad



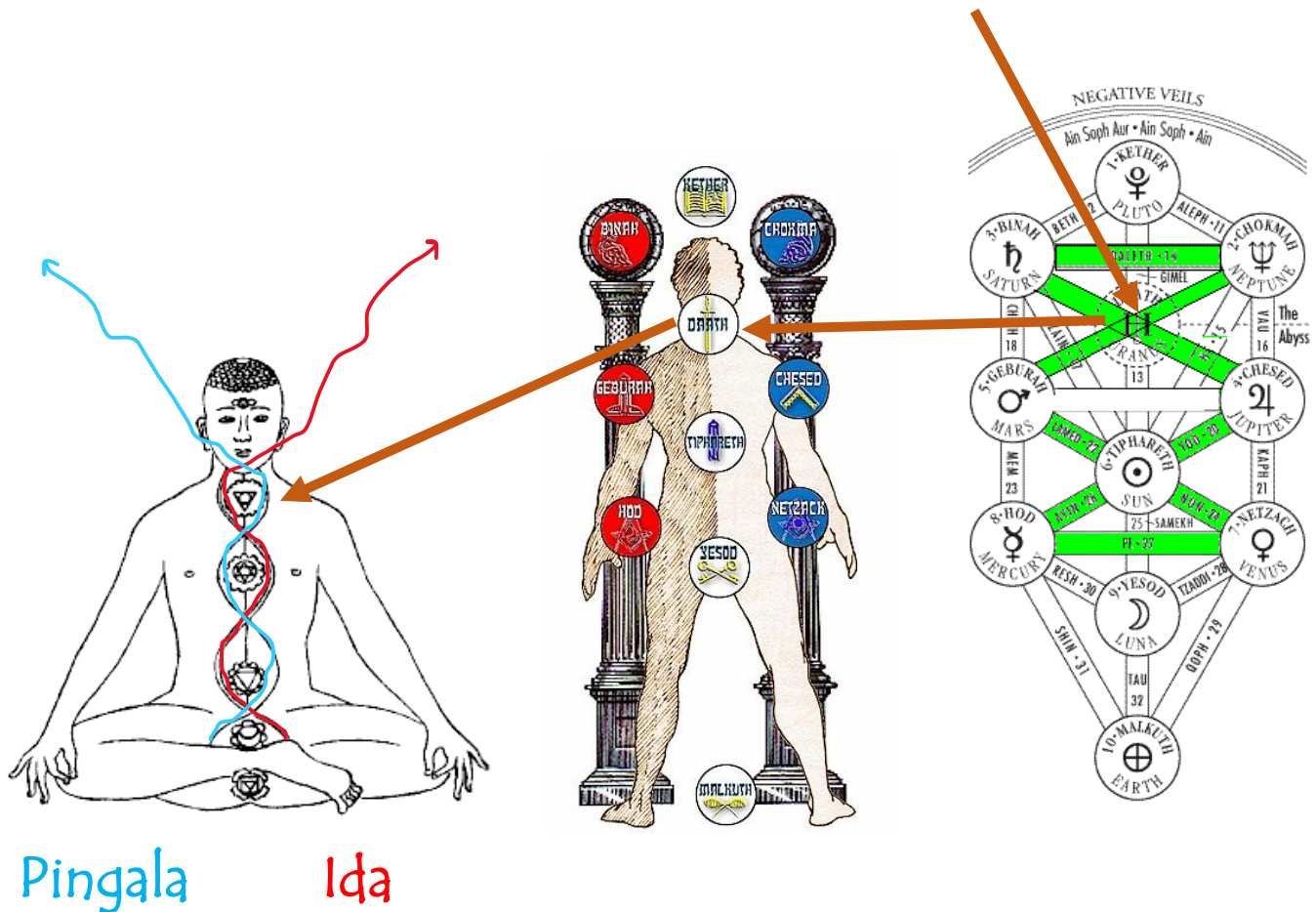
Tree of Life to Tower of Babel

Taking on judgement we went from a being full of life-creating and life-giving energy to Babbling fools creating experiences of Life-Suppression and Life-Taking.

LIVE to EVIL (living backwards)

Stuck in our reptilian bRAins, our Kundalini and energy centers became locked out of the higher functioning of our minds and a loss of the aware connection to our highest-self (Source).

Missing/Swallowed Fruit on the tree.



TREE of LIFE



Toto-DIAL field



Fractal in nerve!



STAIRWAY TO HEAVEN

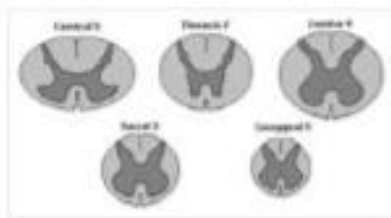
11 When he reached a certain place, he stopped for the night because the sun had set. Taking one of the stones there, he put it under his head and lay down to sleep. 12 He had a dream in which he saw a stairway resting on the earth, with its top reaching to heaven, and the angels of God were ascending and descending on it. 13 There above it stood the LORD... -Genesis 28:11-13

What are angels? What do they do?

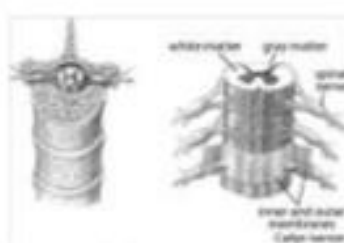


Man asleep at the base of the ladder = Kundalini = God calling down to us to "WAKE UP!"

Tunnel of LIGHT = Spinal cord
Memory is energy body, as one leaves the body at death they travel back up the spin and have life flashes.



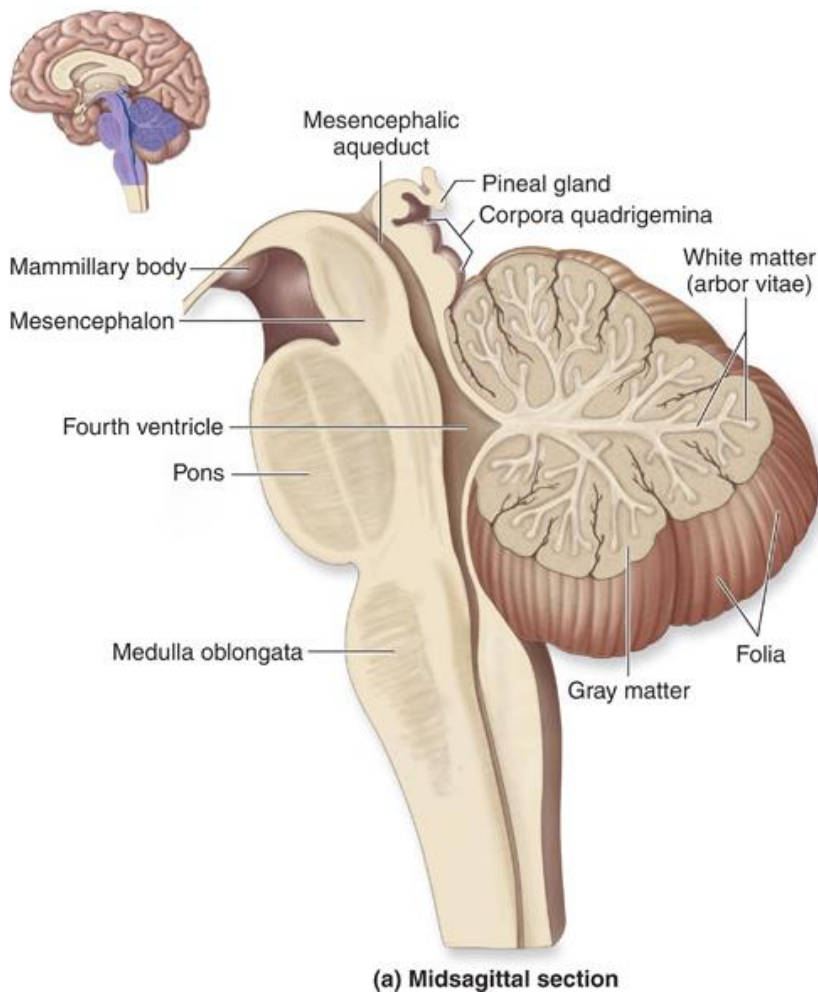
Hierarchy of angels.



See the wings going all the way up!

Seven Arch Angels = 7 Cervical Vertebrae

Basic Symbolism in the Reptilian Brain



The snake (spinal cord and brain stem) is on the tree (Cerebellum is called the Tree of Life).

The snake has an egg or piece of fruit in its mouth.



Our body, and reality at large, has multiple layers of meaning presented in and as fractalic hollow-graphic embedded in-form-ation.

The symbolism of the snake biting or swallowing the egg is the Yang sperm and Yin seed of life coming together, which represents genesis and ties it into the book Genesis.

Adam and Eve

(pineal and pituitary)

Garden

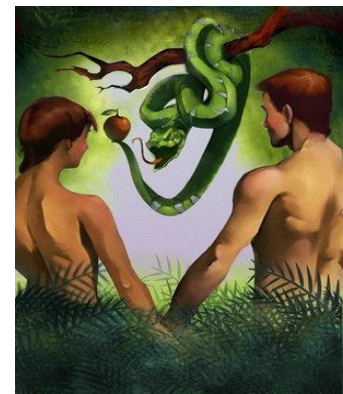
(living and experiencing constant connection with God)

when the snake tempts them

(pulls and traps their attention in the lower brain/consciousness)

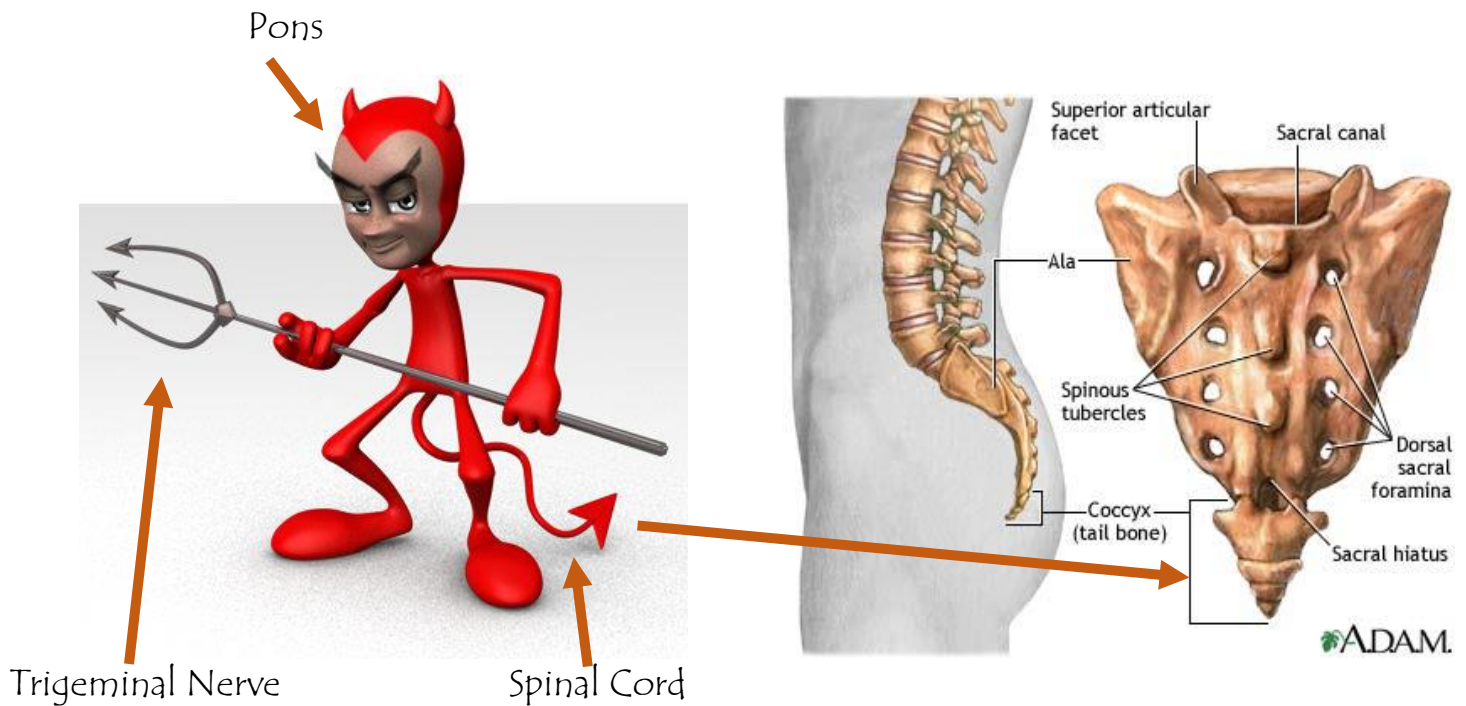
fall from grace

(our new judgements/perception prevent us from seeing the grand garden we live and depend on)



We are the fallen ones. We have fallen from grace. However, this doesn't mean that God kicked us out. We through our clouded view (misperception based on judgments) we are unable to see that we never left the Garden of Eden. The Garden of Eden isn't some place on the planet. IT IS THE WHOLE PLANET!! We are unable to see this because we are trapped in our lower mind. Our salvation is not in asking God to take us back, but for us to empower ourselves by reaching up and out of the reptilian mind. This is what life is all about. At least the current state we are in.

Reptilian Brain – The Real Devil



It is interesting to me that the devil (**LIVED backwards**) has a tail like most reptiles, but with one distinction. The devil is usually depicted with a pointed arrow styled end to his tail. I followed the spine (Ganesh's trunk) down from the reptilian brain and it ends at the sacrum...an **ARROWHEAD SHAPED BONE!** This further backed up my theory of the devil being the reptilian brain.

If you look at the spine from the side laying down, it totally looks like a snake. With the sacrum being its head it looks like a cobra snake.

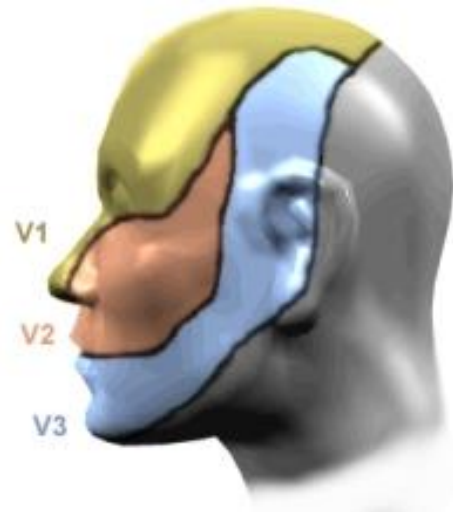
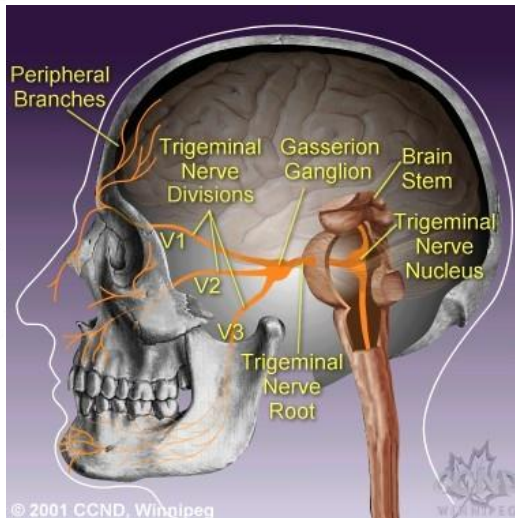


SPINE WAVE

The Devil's Triton

The devil carries a triton, and so too does Shiva which represents the higher-mind.

Kundalini Control
Emotional/Hypothalamus
Pineal



Trigeminal Nerve

Pitchfork = Trigeminal Nerve. The tie into the face. What we see, hear, taste and smell. Posiedon, Shiva and Neptune had tridons. They all had access to the deep subconscious. Submarine = UNDER water

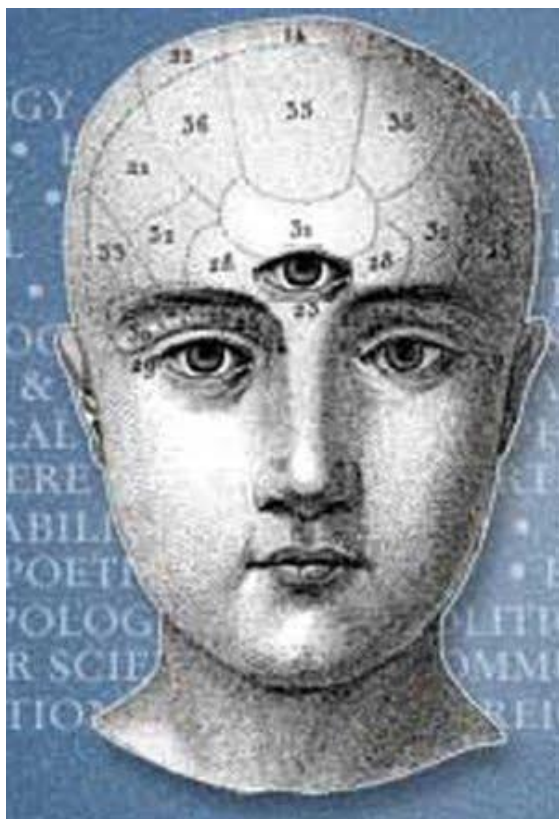
Notice how the Peripheral Branches of the trigeminal nerve go up in front of the 3rd eye. No doubt blocking or closing it off when in a devilish state of mind. In the picture on the right you see the trigeminal nerve affects the colored areas. To me, it looks like a mask. This mask covers over our true selves when the Reptilian brain is in charge.

Basically the source of our desires and how we satisfy them! Habitual mental patterns over higher functions of one's being.

When the reptilian brain is ruling our consciousness the devil is in charge. Holding his triton (our trigeminal nerves) the devil controls our senses and actions. The animal side (basic instincts) are in control and we act like beast (666).

The Beast

The serpent kundalini energy is not evil in of itself. It is only when we as individuals or collectives operate from our lower instinctual minds only...meaning we lack higher reasoning and perception. The goal of all humans is to continually grow into power awake/aware being. This entails going beyond our lower mind (controlling our basic instincts) and awakening the power of the higher mind (limbic and neo cortex).



666

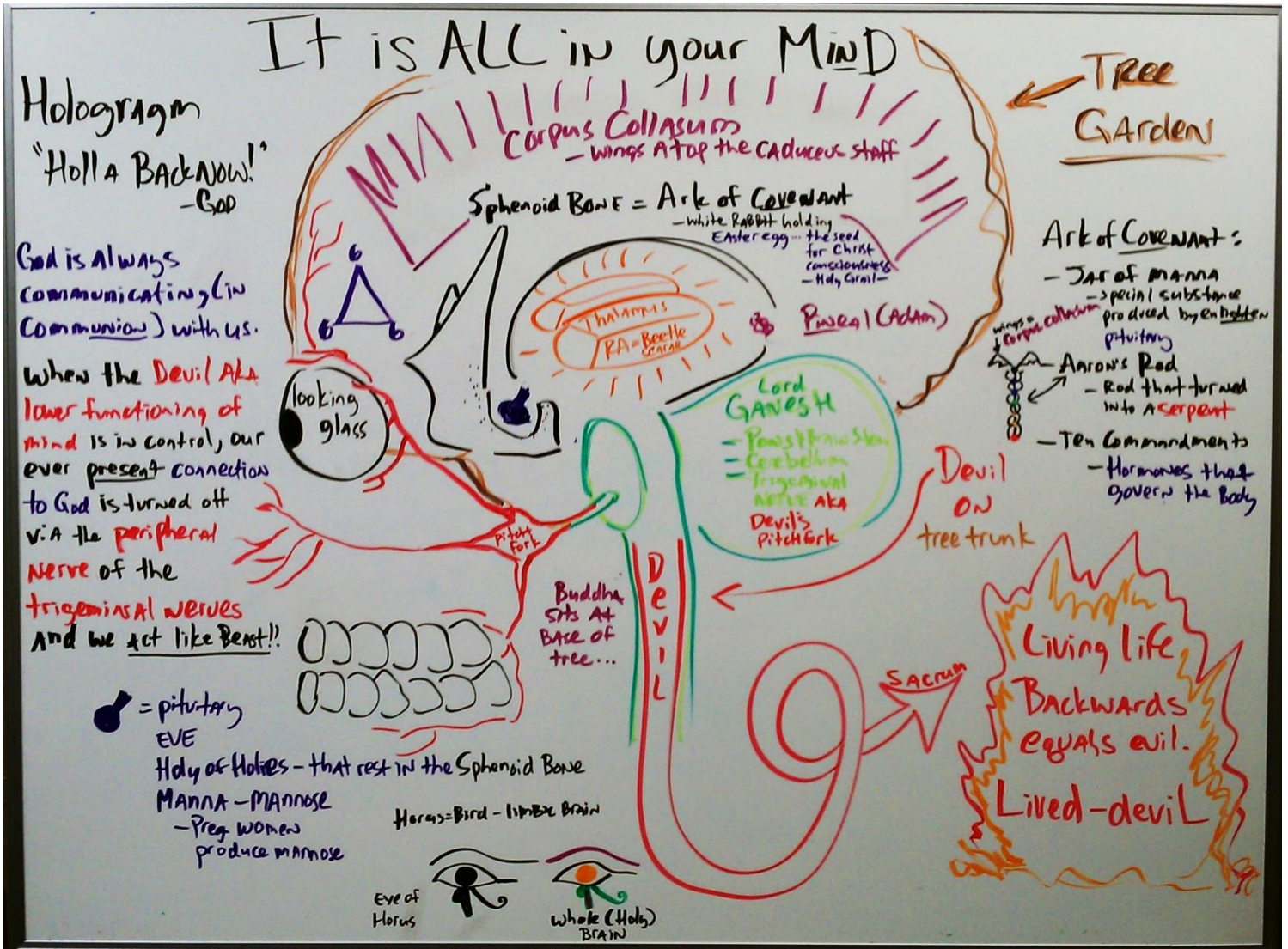
We all have beast potential. Evil shows up in the world through us. From the inside out NOT the outside in!

The 6th chakra is known as the 3rd eye. We actually have 3 eyes. This chakra governs our sight aka perception aka beliefs aka projections of and into the world.

Left Eye = Right Feminine bRAIn (Yin)
Right Eye = Left Masculine bRAIn (Yang)
3rd Eye = Represents the Higher Mind

If you give each eye a 6 you get 666. When we view the world through the split/dualistic/polarized mind we see things as separate from us, which can lead to harming one another. When the mind is in complete balance, the three eyes are unified. $6 + 6 + 6 = 18$. In numerology all numbers are added to a single digit. $1 + 8 = 9$. 9 is the number of completion and is a 6 (which is a head facing down) turned upright with the head facing up!

The good news is...there is a way out!



Our Patterns of Survival (Reptilian/Lower-brain) keep us from Atonement (at-one with God). However, we can access our higher brain by diving deep into our feeling world (Limbic/Mid-brain). Pain is the doorway. By exploring our Pain through the feeling world, we access Enthusiasm. Enthusiasm is experienced when get past right and wrong. The Right and Wrong perceived world creates an W.A.R. (we are right) environment where even religion can be little more than a gang (reptilian brain) flashing the icons and judging one another. The result is Anger, Fear, Worry, Grief and Apathy.